



**ALLIED INDUSTRIAL
ENGINEERING**

Quality Engineering Solutions

Defence Industry

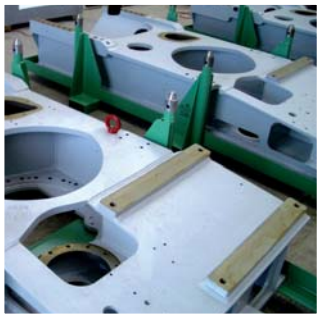




**ALLIED INDUSTRIAL
ENGINEERING**
Quality Engineering Solutions

7-8 Manukorihi Drive, Kawerau. 3127
PO Box 108, Kawerau. 3169
New Zealand
P: + 64 7 323 8877
F: + 64 7 323 7826
E: info@aie.co.nz

www.aie.co.nz



Medium to heavy mechanical components which comply with tight specifications.



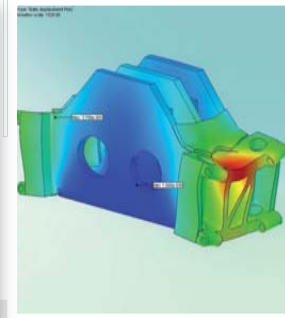
Machined components for ASMD upgrade to ANZAC class frigates.



Rudders for Royal New Zealand Navy Project Protector vessels.



Steam turbine casing in 5 face double column machining centre.



Finite Element Analysis used to design complex components.



Impellor and wear ring for 80 cubic metre per second water jet propulsion unit.

The Defence Industry

Allied Industrial Engineering (AIE) is able to deliver a range of superior solutions for the Defence Industry. AIE has evolved from a total solution provider to the Pulp and Paper industry, and has used this expertise and capabilities to provide specialist products and services to the Defence Industry.

At AIE we demonstrate dedication to ensure the satisfaction of our customers through a complete understanding of their requirements and by ensuring our products and services meet, or exceed, their expectations.

Our design and engineering experience and capabilities, complemented by a world class workshop facility means AIE is a "one stop shop" for a wide range of Defence related components.

Management and leading staff of Allied Industrial Engineering have held senior engineering positions in industry and this means we have an understanding of the commercial requirements that are now a reality in the modern defence force.

AIE has established relationships with key Defence Industry leaders and defence personnel. We have a history of successfully manufacturing specialised components for

use in naval marine applications to some of the largest internationally recognised defence contractors.

Allied Industrial Engineering manufactures medium to heavy mechanical components, which comply with the tightest specifications for military applications.

Our Kawerau workshops are located in the Bay of Plenty of New Zealand, and our close proximity to the Port of Tauranga, New Zealand's largest port, means plant and equipment can be efficiently and safely transported to and from other countries.

In order to meet customer demand, our expertise and capabilities have grown over the years. We are now able to offer total solutions to engineering and operational problems in the Defence Industry, including:

- Maintenance and reliability issue investigation and problem solving.
- Feasibility studies of possible solutions.
- Engineering Design & Draughting using 3D modelling and Finite Element Analysis.
- Manufacture and refurbishment of plant and equipment from large propeller shafts and hubs to Rudders, Stern Tubes and 'P' Brackets.
- Machining of specialised componentry .
- TLS- Through-life support.
- Installation and commissioning of new and refurbished plant and equipment.
- Provision of skilled and qualified site fitters and fabricators for maintenance projects.
- Computerised Dynamic Balancing of rotating plant and equipment up to 30 tonnes, to ISO 1940 class G1 and higher.

- Precision, cost effective machining and fabrication of large components up to 60 tonnes.

Our Quality Management System (QMS) meets the requirements of ISO 9001, and we place a high emphasis on documented systems and procedures. This means we are able to guarantee high quality products and services at all times and are able to achieve compliance with the necessary specifications for your particular build. We fully understand and are experienced with the high standards of documentation required for the Defence Industry.

Our 62 tonne lifting capacity, combined with large machine tools and open workshop space means we are able to efficiently

handle, machine and fabricate large components for the Defence Industry – e.g. 5 face double column machining centre with 3m x 6m x 2m machining envelope, turning capacity up to 60 tonne x 5m diameter x 18m long for special applications

Our staff's dedication to getting projects completed on time by being able to work long hours at short notice if required, along with our customised planning systems and project management skills means we are able to guarantee tight lead times for critical projects.

We look forward to the opportunity of being of assistance to you and your engineering/procurement team.



Defence Industry

www.aie.co.nz